



January Tidbits

2025/26 Kindergarten

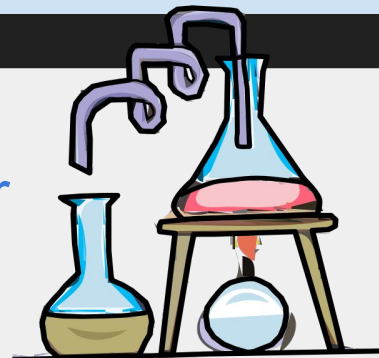
Kindergarten Registration is open for the 2025/2026 school year! Children who turn 5 by December 31, 2025 are eligible to register for Kindergarten in September. Please go to our website www.rossford.ca to register. If you have any questions regarding the registration process, please call our office at 403-335-3234.



Science & Education Fair

Our annual Science & Education Fair

will take place on Friday, February 7th. Please check out the Science Fair Handbook and form on www.rossford.ca for more information if your student is interested in participating.



MISSION IMPOSSIBLE

The gym has once again been set up for Mission Impossible for the month of January! This is a fun program that turns the gym into an obstacle course that the students get to use during their classroom's gym times. Our students look forward to this with excitement every year!!

DATES TO REMEMBER:

Wednesday, January 15th:

K1 Hot Dog Fun Lunch

Thursday, January 16th:

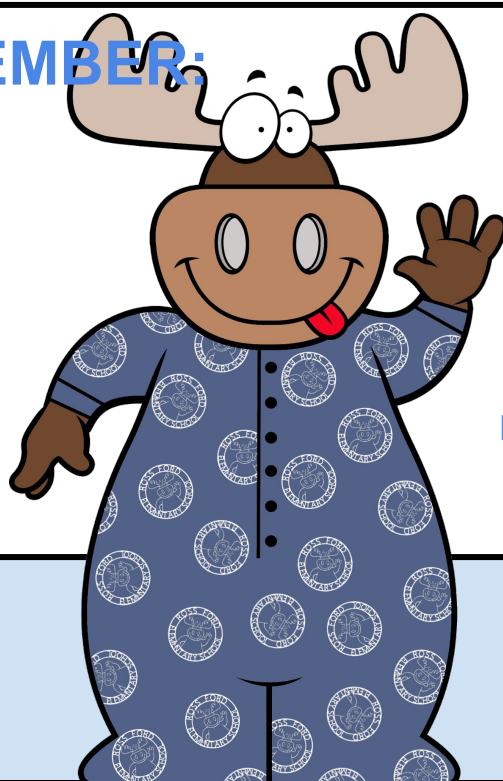
Hot Dog Fun Lunch

Monday, January 20th:

7pm - Parent Council Meeting

Wednesday, January 29th:

PJ Day



Kindergarten Fridays:

January 10th - K2 T/Th

January 17th - K1 M/W

January 24th - K2 T/Th

No School Days:

Thursday, January 30th

Friday, January 31st

Looking ahead!

Feb. 7 - Science & Education Fair

Feb. 17- Family Day

Feb. 18-21- Winter Break

Principal:

Mr. George Thomson

Acting Vice Principal:

Mr. Trevor Sanche

2016 23rd Street,
Didsbury, Alberta T0M 0W0

403-335-3234

www.rossford.ca

rossford@cesd73.ca

For more school information and updates please follow us on [Facebook!](#)



JANUARY

Sun	Mon	Tue	Wed	Thu	Fri	Sat
			1 	2 	3	4 
5 	6 WELCOME BACK!	7 8pm -Hot Dog Lunch orders due	8	9	10 K2 T/Th	11 
12 	13	14	15 K1 Hot Dog Fun Lunch	16 Hot Dog Fun Lunch 	17 K1 M/W	18
19	20 7pm - Parent Council Meeting	21	22	23	24 K2 T/Th	25 
26 	27	28	29 PJ Day 	30 No School	31 No School	

Attendance Matters

Ross Ford Elementary School



*At School...
on time...
every day.*

Absences Add Up!

Missing just **two days a month** means that a child will miss **10%** of all school days or **one whole month of learning**.